



# 2014 Melbourne Tenpin Cup

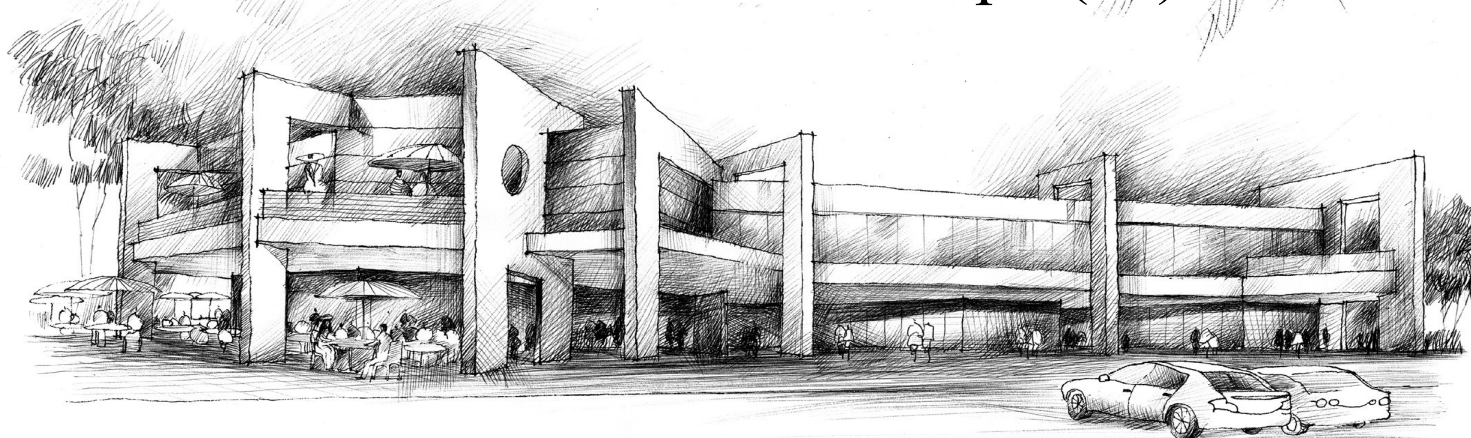
**Over \$25,000 in cash & prizes**

**Entry Fee \$230\***

**June 7th,  
8th & 9th**

## Oz Tenpin Chirnside Park

25 Fletcher Road Chirnside Park ph:(03)97270007



**\*9 Game Qualifying Format with 3 Game re-entry @ \$30**

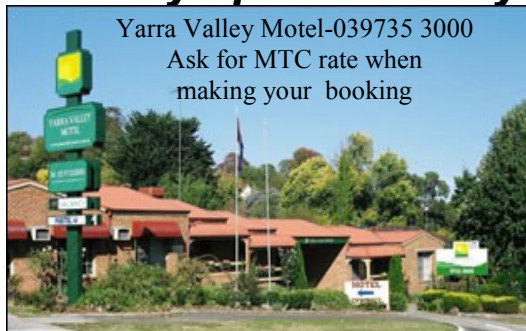
**Prize Fund based on 90 entries 80 re-entries.**

**\*Bonus prizes for Qualifying Round Male & Female**

**1st. \$200.00 2nd. \$150.00 3rd. \$100.00**

**(based on first 9 games qualifying)**

**Proudly sponsored by**



Yarra Valley Motel-039735 3000

Ask for MTC rate when  
making your booking



**Brunswick®**



TBA Accreditation  
# A14/130  
2014 TBA Ranked Event

# 2014 Melbourne Tenpin Cup

## Welcome to

The 2014 **Schweppes** Melbourne Tenpin Cup presented by Oz Tenpin

## Tournament Rules & Regulations

### GENERAL INFORMATION

This tournament is open to all Tenpin Bowling Australia Limited (TBA) and WTBA registered players and affiliates. All TBA Rules and Regulations shall apply at all times. The International/National code of conduct rules apply. This is a "scratch" event.

### No Mobile phones may be used whilst bowling.

Centre is a smoke free venue. No smoking is permitted while bowling.

### CHECK-IN TIME

All participants must check-in at the tournament counter at least 30 minutes prior to their scheduled squad time. The time will be that of the Oz Tenpin clock. No late entries will be accepted.

### PLAYING ATTIRE

All male bowlers are required to wear tailored slacks or tailored short. Female bowlers may wear skirts, tailored slacks or tailored 3/4 shorts. Bowlers are required to dress for the event with a sense of respectability.

**BOWLING BALLS** It is the bowler's responsibility that all weights and specifications of their bowling balls conform to WTBA regulations. The Tournament Committee reserves the right to examine the balls used by the participants. Use of an illegal ball is grounds for forfeiture of game, prizes, standings and possible disqualification, aside from penalties that may be imposed by WTBA.

**PLAYING AREA** Other than the players, only Tournament Officials will be allowed to enter the playing area.

**TIE-BREAKING PROCEDURES** In the event of a tie in the last position of the qualifying round, a one game roll-off will serve as a tie breaker. Should a tie occur for any of the minor cash positions, the prize money will be combined with the next lowest place and divided between the two tied bowlers.

**OILING** Uniform oiling shall be used throughout the entire tournament.

The pattern will be: **WTBA LOS ANGELES**

www.tenpin.org.au (under Tenpin events) and also on www.totalbowling.com.au website.

**PROTESTS** MUST be lodged with the Tournament Director within 15 minutes of the completion of bowling in which the incident occurred. In the case of a Matchplay round, protests are to be lodged prior to the next round.

**FOULS** Any disputed fouls must be brought to the attention of the Lane Marshall before the delivery of the next ball. No dispute can be made after the 2nd ball has been bowled.

### SPECIAL NOTES

All \$ (dollar) amounts in this entry form are in AUD\$

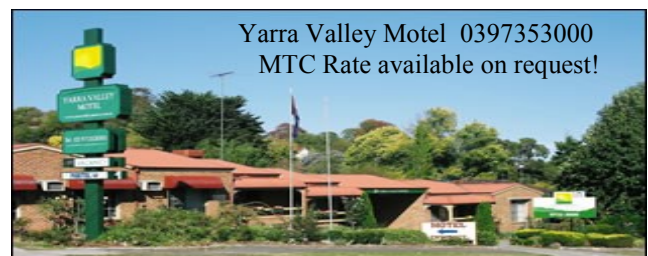
**Squad preference to bowlers with fully paid or paid deposits, past winners, International Bowlers and invited bowlers.**

- Bowlers are not permitted to sand or apply any form of liquid or chemical on the surface of the bowling balls during any block of competition.
- The Tournament Directors reserve the right to accept or reject any entry they deem fit.
- Any matters arising that are not covered in these Rules shall be dealt with by the Tournament Committee whose decision shall be final and subject to change only through an appeal to TBA. Such appeal should be made in writing and within 48 hours of the decision by any of the above.
- No refund shall be made after entry has been registered and verified. Bowlers who do not check in for their scheduled squad time shall automatically forfeit all fees paid.

### • SPONSORS



**Brunswick**



# 2014 Melbourne Tenpin Cup

## TOURNAMENT FORMAT

### Qualifying Round— Day One & Two

All entrants will complete 9 games in one appearance in their nominated squad. 3 x 3 game blocks.  
Moving lanes odds to left & evens right by three pair.

To ensure even conditions,

**QUALIFYING TO BE DONE ON LANES 9-26**

**RE-ENTRY TO BE DONE ON LANES 9-26**

**Re-entry blocks:** 1 Original block from qualifying must be kept, with a maximum of 3 Re-entries per block permitted to be substituted to maximize qualifying score.

At the conclusion of the 9 games qualifying, including re-entry scores, the top **15 Men** and top **8 Ladies** will progress to the "Matchplay" stage.

### Matchplay — Day Three

The top **15 Men** will bowl a further 7 games. Three way Match-play plus a positional round, and the top **8 Women** will bowl a further 7 games Match-play plus a positional round. Pinfall **will not** carry over from Stage one.

The winners based on Matchplay pinfall PLUS Bonus pins will be declared the

### 2014 Schweppes Melbourne Tenpin Cup Champions

**Note:** Yarra Valley Motel is providing sponsorship for this event. If you require accommodation please call them direct & ask for the **Melbourne Tenpin Cup rates!**

\*Sponsors are difficult to find for Tenpin events  
Consider supporting these sponsors where possible!

**\*\*Please consider booking the latest flight home to avoid disappointment !!**

## BOWLING SCHEDULE

### Saturday 7<sup>th</sup> June

A Squad - Max 36 Bowlers (18 Lanes x 4 per pair)  
Check-In 8.30 am Bowl 9.00 am

#### Re Oil

B Squad - Max 36 Bowlers (18 Lanes x 4 per pair)  
Check-In 1.00 pm Bowl 1:30 pm

#### Re Oil

C Squad - Max 36 Bowlers (18 Lanes x 4 per pair)  
Check-In 5.30pm Bowl 6.00pm

### Sunday 8<sup>th</sup> June

Re-Entry Squads (Limited to 36 Bowlers, 4 per pair)

#1 - 9:00am (36) #2 - 10.30am (36)  
#3- 12.00pm (36)

#### Re Oil lanes

#4 - 2:30pm (36) #5 - 4.00pm (36)  
#6- 5.30pm (36)

### Top 15 Men and 8 Women Bowlers Qualify For Match Play Stage

### Monday 9<sup>th</sup> June

#### Matchplay

Top 15 Men Bowlers bowl 7 games match-play.  
Plus positional Round (8 games in total)  
3 Per Pair  
20 bonus pins 1st, 10 bonus pins 2nd. Drawn games split positional points.

**Check-In 8:30 am Bowl 9.00 am.**

Top 8 Women Bowlers bowl 7 games match-play  
Plus positional Round  
2 Per Pair  
20 bonus pins per win & 10 bonus pins for a draw  
Check-In 8.30 am Bowl 9.00 am

### ENTRY FORM

#### 2014 MELBOURNE TENPIN CUP

NAME: \_\_\_\_\_ TBA NO: \_\_\_\_\_

CONTACT PHONE NO: \_\_\_\_\_

EMAIL: \_\_\_\_\_

Squad Preference—Indicate choices as 1, 2, or 3.

A ☐ B ☐ C ☐

Entry Fee \$230.00

Deposit: \$50.00 due by 11/5/14

Via Mail: Tournament Director— Oz Tenpin, PO Box 278 BUNDOORA Victoria 3083

We accept Credit Card payment over the phone or EFT payments can be accepted.



# 2014 Schweppes Melbourne Tenpin Cup

## Prize Fund

*Based on 90 Entries and 80 Re-entries  
With a 1 in 3 minimum payout*

### **Men's**

*\* 1st, 2nd & 3rd Prize payout Guaranteed*

**1<sup>st</sup> Place \$3,000 Plus Trophy\***

+ Entry into 2015 Melbourne Cup

**2<sup>nd</sup> Place \$2,300 Plus Trophy\***

**3<sup>rd</sup> Place \$1,700 Plus Trophy\***

4 <sup>th</sup>	\$1,500	17 <sup>th</sup>	\$350
5 <sup>th</sup>	\$1,400	18 <sup>th</sup>	\$340
6 <sup>th</sup>	\$1,200	19 <sup>th</sup>	\$320
7 <sup>th</sup>	\$850	20 <sup>th</sup>	\$300
8 <sup>th</sup>	\$800	21 <sup>st</sup>	\$280
9 <sup>th</sup>	\$750	22 <sup>nd</sup>	\$260
10 <sup>th</sup>	\$700	23 <sup>rd</sup>	\$240
11 <sup>th</sup>	\$650	24 <sup>th</sup>	\$230
12 <sup>th</sup>	\$600		
13 <sup>th</sup>	\$550		
14 <sup>th</sup>	\$500		
15 <sup>th</sup>	\$450		
16 <sup>th</sup>	\$400		

### **Women's**

*\* 1st, 2nd & 3rd Prize payout Guaranteed*

**1<sup>st</sup> Place \$1,100 Plus Trophy**

+ Entry into 2015 Melbourne Cup

**2<sup>nd</sup> Place \$ 950 Plus Trophy**

**3<sup>rd</sup> Place \$ 700 Plus Trophy**

4 <sup>th</sup>	\$ 600	11 <sup>th</sup>	\$ 250
5 <sup>th</sup>	\$ 550	12 <sup>th</sup>	\$ 240
6 <sup>th</sup>	\$ 500	13 <sup>th</sup>	\$ 230
7 <sup>th</sup>	\$ 450		
8 <sup>th</sup>	\$ 400		
9 <sup>th</sup>	\$ 350		
10 <sup>th</sup>	\$ 300		

